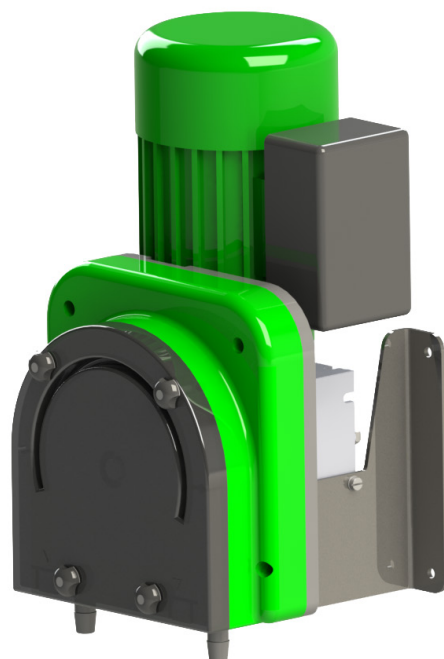


DATA SHEET

BGC SERIES

Dosing Pump



dosiper

DESCRIPTION

BGC dosing pumps are high-flow peristaltic pumps especially designed to dose liquid products in installations that require a high precision and robustness rate.

These pumps have a high chemical compatibility since the peristaltic tube is the only part in contact with the product.

GENERAL FEATURES

Several peristaltic tubes according to customer needs

Easy maintenance

Standard flow rates: 100 l/h, 200 l/h and 400 l/h (other flow rates upon request)

TECHNICAL FEATURES

Power supply voltage: 230 Vac 50 Hz (other voltages upon request)

Nominal consumption: 1.5 A

Maximum working pressure: 0.5 bar

With wall or floor bracket

Maximum dimensions (mm): 356x200x200

Maximum weight: 5.3 kg

IP Code: IP55